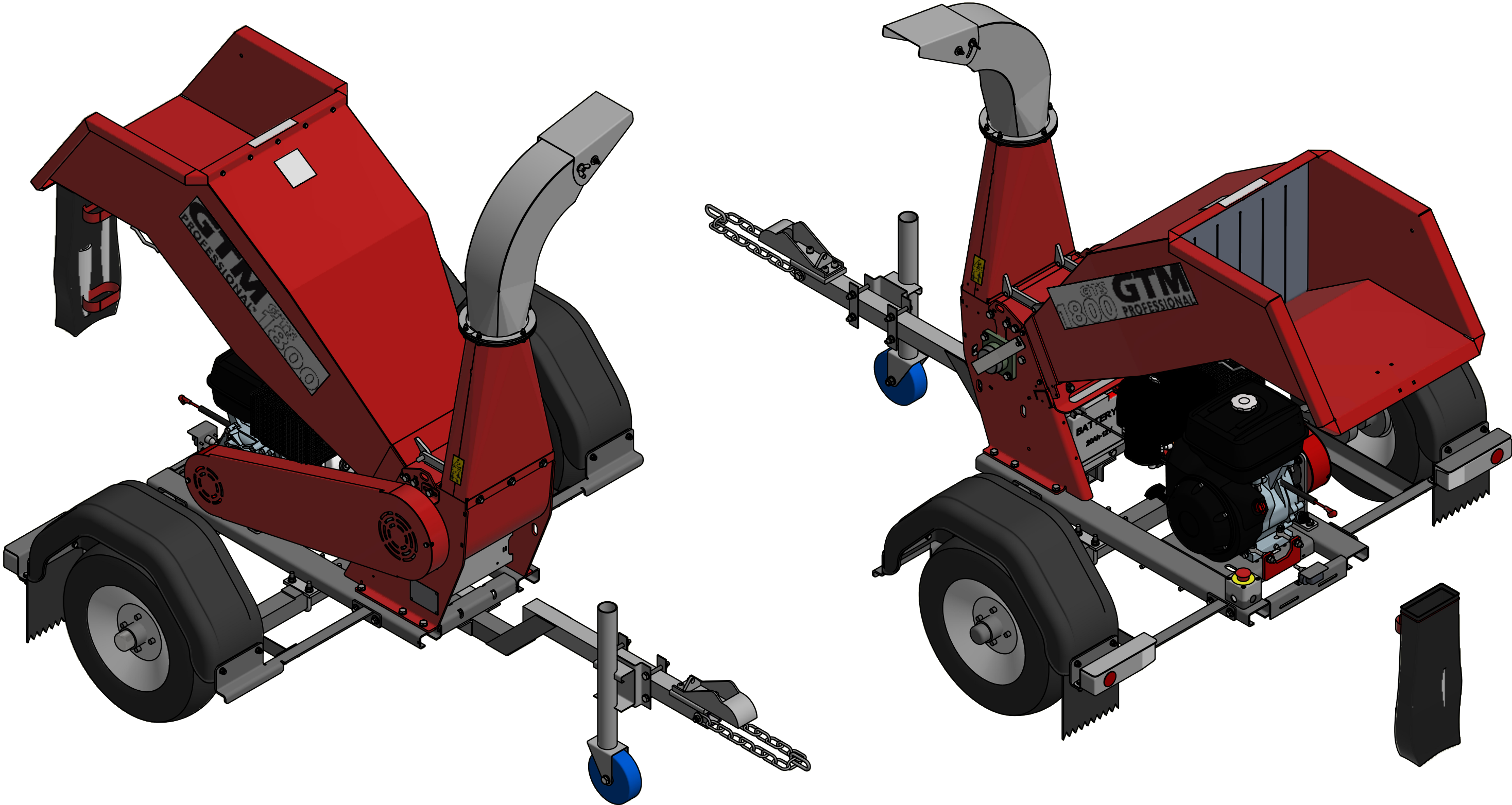
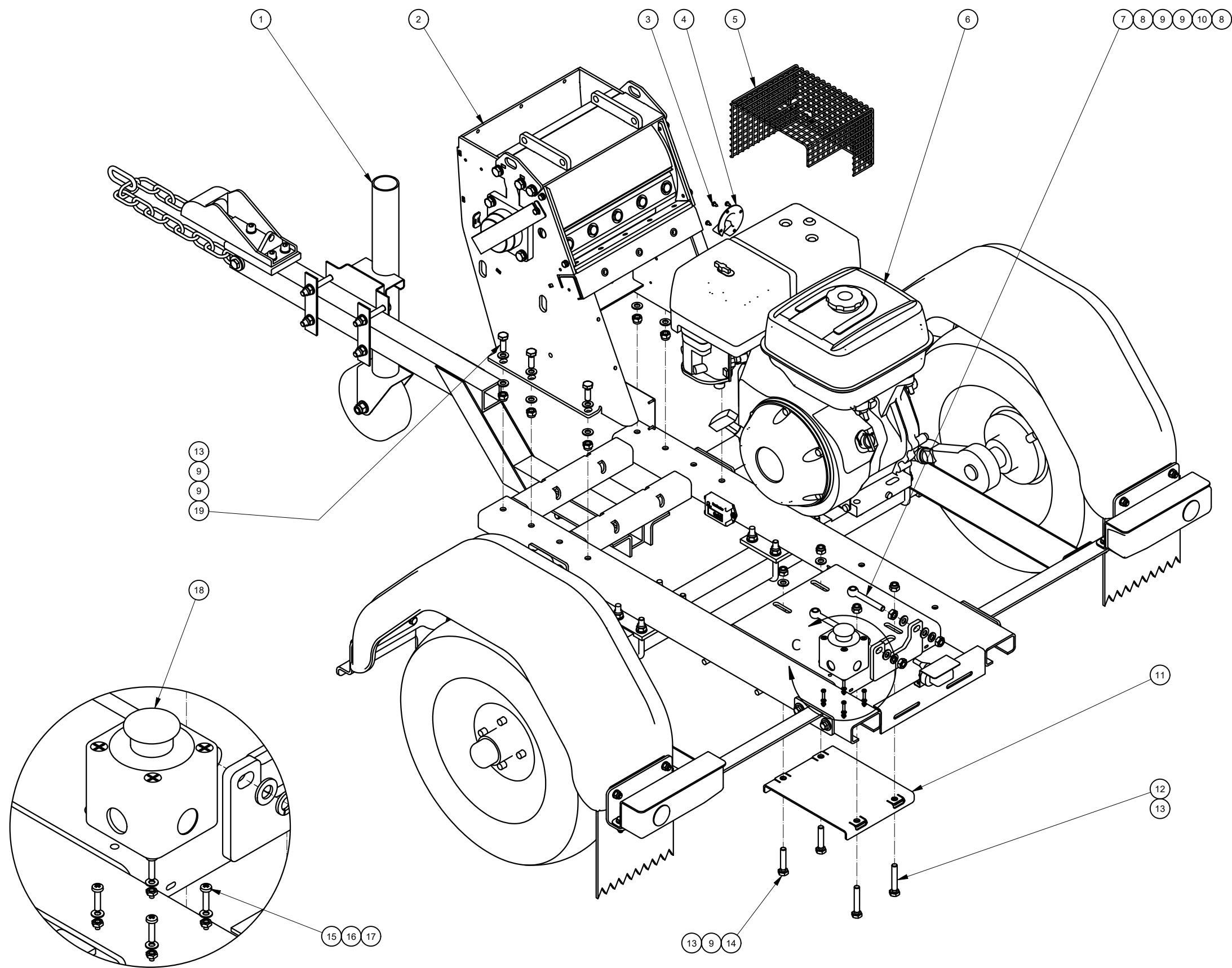


European projection 欧洲项目				Scale: 范围:	1:14	Designer: 设计师:	junlv	
				Units: 单位:	mm	Approved: 审批:		
Finishing: 精加工:				Date: 日期:	2021/6/5	Revision: 版本號:	1	
Weight: 重量:		N/A		CN name: 中國名:		Material: 物料:		
Part: 零件號:		D07-GS13T51		Description: 描述:			GTS1300V5 non EU on trailer	
								A3



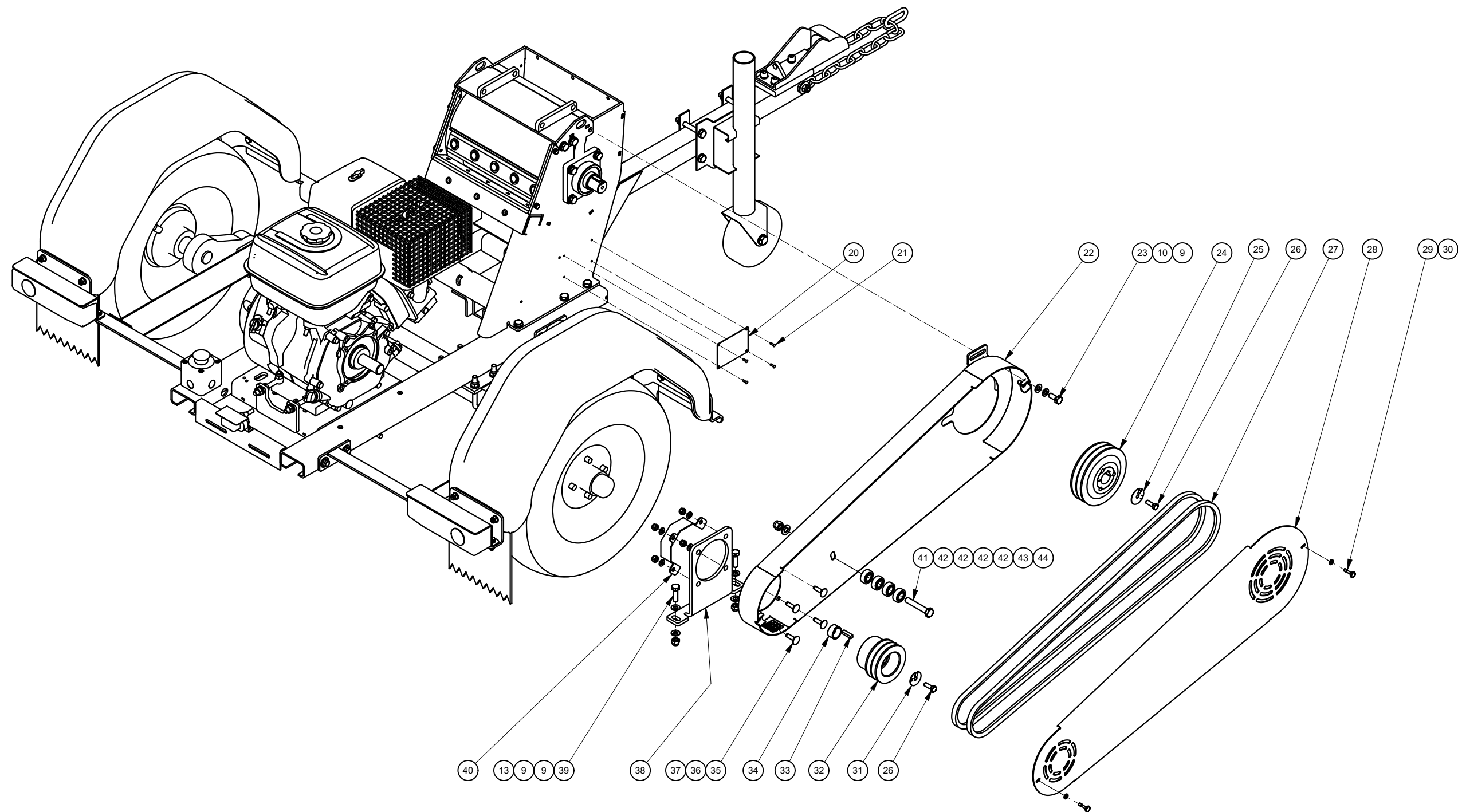
European projection 欧洲项目		Scale: 范围:		1 : 10		Designer: 设计师:		junlv				
		Units: 单位:		mm		Approved: 审批:						
		Date: 日期:		2021/6/5		Revision: 版本號:		1				
Finishing: 精加工:		CN name: 中國名:				Material: 物料:						
Weight: 重量:		N/A										
Part: 零件號:		D07-GS13T51				Description: 描述:		GTS1300V5 non EU on trailer				A3

Parts List for D07							
ITEM	PART NUMBER	REV	DESCRIPTION	CN NAME	STD	QTY	DATE OF CHANGE
1	A99-0000004	1	GTS1300V5 trailer 1 78	GTS1300V5 拖车		1	
or	A99-0000005	1	GTS1300V5 trailer 2'	GTS1300V5 拖车		1	customer choice
2	A11-G13N002	-	sub assembly shredderbox GTS1300 non- EU			1	updated, 2021.6.7
3	S01-M04005T-FN		cross recessed head tapping screw 4,2x9,5	十字槽盘头自攻螺钉 4,2x9,5	ISO 7049	4	
4	M03-301500H	1.A	muffler deflector for Honda	消音器罩		1	
or	M03-3019000	1	muffler deflector - MHI	三菱消声器罩		1	customer choice
5	B05-0002000	1	heat protector Loncin/Honda			1	
or	M02-9004000	4	heat protector-MHI	三菱防烫罩		1	customer choice
6	C01-GGTE420	1	engine loncin GTE420			1	
or	C01-GGTE42E	1	engine loncin G420FD - electric start			1	customer choice
or	C01-GB40GPN	1	engine MHI GB40			1	customer choice
or	C01-H0GX390	1	engine Honda GX390			1	customer choice
7	S01-M10080E-PN		eyebolt M10x80		DIN 444	2	
8	S03-M10000N-ON		hexagon standard nut M10	螺母 M10	DIN 934	4	
9	S04-OM1020P-IR		plain washer 10	平垫圈 10	DIN 125	23	
10	S04-OM1016L-IR		open spring washer 10	弹簧垫圈 10	DIN 127	3	
11	M03-3166000	1.A	weldassembly engine lockingplate			1	
12	S01-M10060N-FN		hex bolt M10x60	六角螺栓 M10x60	DIN 933	2	
13	S03-M10000L-ON		tall self lock nut with nylon insert M10	自锁螺母 M10	DIN 982	12	
14	S01-M10050N-FN		hex bolt M10x50	六角螺栓 M10x50	DIN 933	2	
15	S01-M04018P-FN		cross recessed pan head screw M4x18	十字槽盘头螺钉M4x18	DIN 7985 (H)	4	
16	S04-OM0408P-IR		plain washer 4	平垫圈 4	DIN 125	4	
17	S03-M04000N-ON		hexagon standard nut M4	螺母 M4	DIN 934	4	
18	E02-SPCOE01	1	emergency switch			1	
19	S01-M10030N-FN		hex bolt M10x30	六角螺栓 M10x30	DIN 933	6	
20	M03-0215000	1	serial number base plate			1	
21	S13-AL32090	1	rivet 3,2x12			4	
22	M03-0235000	5	belt cover	皮带罩组合		1	
23	S01-M10025N-FN		hex bolt M10x25	六角螺栓 M10x25	DIN 933	1	
24	M07-314600T	3	taperlock V-belt rotor pulley 146mm			1	
25	M03-3025000	4.B	safety ring for rotor	转子安全环		1	
26	S01-M08025N-FN		hex bolt M8x25	六角螺栓 M8x25	DIN 933	2	
27	S07-A691780-LP	2	V-belt GTS1300			2	
28	M03-0200000	4.D	belt cover lid	皮带罩盖		1	
29	S01-M06025X-PN		hex head bolt with reduced shank M6x25	不脱出螺钉 M6x25	DIN 7964	2	
30	S04-OM0612P-IR		plain washer 6	平垫圈 6	DIN 125	2	
31	M03-3026000	1	safety ring for engine			1	
32	M07-002700T	1	taperlock pulley assembly Loncin MHI Honda engine			1	
33	M01-3003000	1	loncin-honda engine key			1	
34	M01-3007000	1.A	bush for engine shaft 16mm			1	
35	S01-M08030X-PN		carriage bolt M8x30	马车螺栓 M8x30	DIN 603	4	
36	S04-OM0816P-IR		plain washer 8	平垫圈 8	DIN 125	4	
37	S03-M08000L-ON		tall self lock nut with nylon insert M8	自锁螺母 M8	DIN 982	4	
38	M03-3028000	3	belt cover support bending			1	updated, 2021.6.7
39	S01-M10035N-FN		hex bolt M10x35	六角螺栓 M10x35	DIN 933	2	
40	M03-9081000	1.A	engine shaft cover 35mm			1	updated, 2021.6.7
41	S01-M12070N-PN		hexagon head bolt partial thread M12x70	半螺纹螺栓 M12x70	DIN 931-1	1	
42	S12-62012RZ		SKF 6201-2RSH		DIN 625 SKF	4	
43	S04-OM1225P-IR		plain washer 12	平垫圈 12	DIN 125	1	
44	S03-M12000L-ON		tall self lock nut with nylon insert M12	自锁螺母 M12	DIN 982	1	
45	A11-G13N001	1.A	sub assembly hopper non-EU			1	updated, 2021.6.7
46	S04-OM0820B-IR		large washer 8	大平垫圈 8	DIN 9021	6	
47	S01-M08025F-FN		flange bolt with hexagon head M8x25	法兰面螺栓 M8x25	DIN 6921	3	
48	S01-M08016F-FN		flange bolt with hexagon head M8x16	法兰面螺栓 M8x16	DIN 6921	3	
49	A03-0025000	1.B	turnable output GTS1800			1	updated, 2021.6.7
50	E11-HOURCRL	1	hour counter	计时器		1	customer choice
51	S01-M05010R-FN		cross recessed pan head screw M5x10	十字槽盘头螺钉M5x10	DIN 7985 (H)	2	customer choice
52	S04-OM0510P-IR		plain washer 5	平垫圈 5	DIN 125	2	customer choice
53	S01-M12030N-FF		hex head fine thread bolt M12x30	细牙螺栓 M12x30	DIN 961	1	
54	A07-GES13R4	1	GTS1300R V4 electrical start assembly	电启动组合		1	customer choice
55	A07-LPS1305	-	loose part set for GTS1300V5 non EU			1	

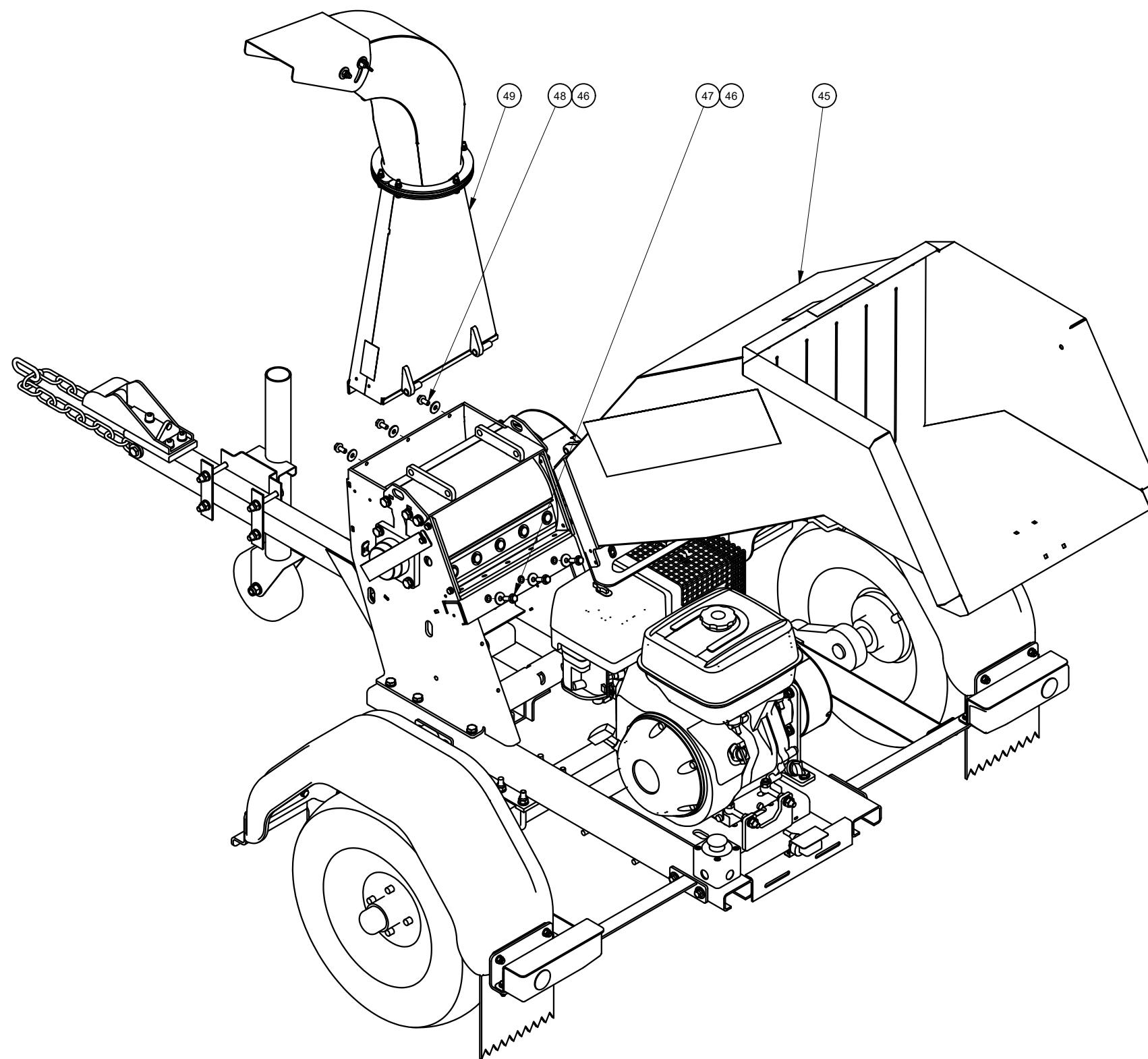


DETAIL C

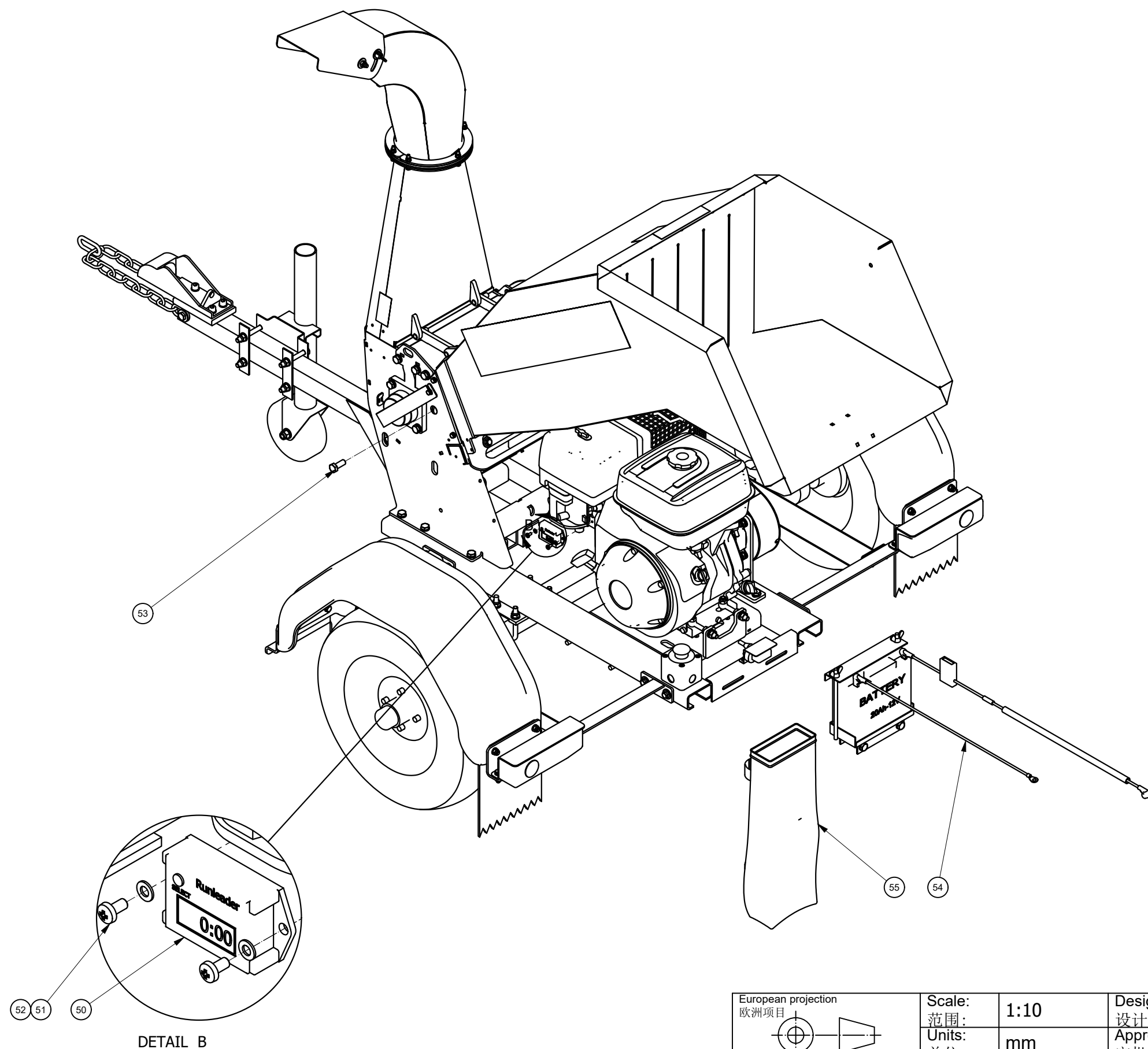
European projection 欧洲项目		Scale: 范围:	1:8	Designer: 设计师:	junlv	 威而德
		Units: 单位:	mm	Approved: 审批:		
		Date: 日期:	2021/6/5	Revision: 版本號:	1	
		CN name: 中國名:		Material: 物料:		
		Part: 零件號:	D07-GS13T51		Description: 描述:	
Finishing: 精加工:				GTS1300V5 non EU on trailer		A3
Weight: 重量:		N/A				



European projection 欧洲项目				Scale: 范围:	1:10	Designer: 设计师:	junlv	
		Units: 单位:	mm	Approved: 审批:				
Finishing: 精加工:		Date: 日期:	2021/6/5	Revision: 版本號:	1			
Weight: 重量:	N/A	CN name: 中國名:		Material: 物料:				
Part: 零件號:	D07-GS13T51			Description: 描述:	GTS1300V5 non EU on trailer			
								A3



European projection 欧洲项目		Scale: 范围:		1:10		Designer: 设计师:		junlv			
		Units: 单位:		mm		Approved: 审批:					
		Date: 日期:		2021/6/5		Revision: 版本號:		1			
Finishing: 精加工:				CN name: 中國名:		Material: 物料:					
Weight: 重量:		N/A									
Part: 零件號:		D07-GS13T51			Description: 描述:		GTS1300V5 non EU on trailer				A3



European projection 欧洲项目		Scale: 范围:	1:10	Designer: 设计师:	junlv	
		Units: 单位:	mm	Approved: 审批:		
		Date: 日期:	2021/6/5	Revision: 版本號:	1	
Finishing: 精加工:		CN name: 中國名:		Material: 物料:		
Weight: 重量:	N/A					
Part: 零件號:	D07-GS13T51		Description: 描述:	GTS1300V5 non EU on trailer		A3